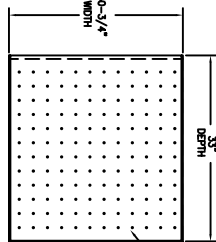
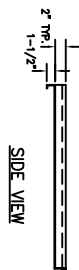


PLAN VIEW



PLAN VIEW



SIDE VIEW

SHELF DETAILS - QTY. 2 REQ'D PER UNIT.

ENGINEERING DATA

SHIPPING WEIGHT: 1100 LBS.

GRADED SIZE: 54"X45"X91" H

UNGRADED SIZE: 52"X43"X85" H

NOM. INTERIOR SIZE: 37"X32"X50" H

PLEASE SELECT

SELECT	PHASE	VOLTAGE	COMPONENT	HP	KW	AMPERAGE DRAW	TOTAL AMPERAGE	AMPERAGE SUPPLY
	3	208 V	FAN MOTOR	0.5	-	2.0 A	32.0 A	40 A
			HEATERS	-	10.5	30.0 A		
			FAN MOTOR	0.5	-	1.0 A		
			HEATERS	-	10.5	13.5 A		
3		480 V					14.5 A	20 A

ELECTRICAL REQUIREMENTS - SELECTION

MACHINE FEATURES & OPTIONS

- CONFIGURATION -
- FREE-STANDING (STANDARD)
 - RECESSED ONE WALL C/W TRIM PACKAGE
- DOOR TYPE -
- LEFT SIDE HINGED (1 DOOR EACH)
 - RIGHT SIDE HINGED (1 DOOR EACH)
- INSULATION -
- FULLY INSULATED CHAMBER (STANDARD)
- OPERATIONAL CONTROLS -
- CHAMBER TEMPERATURE ANALOG DISPLAY
 - CHAMBER TEMPERATURE DIGITAL DISPLAY
- HEATING OPERATION -
- ELECTRIC ELEMENTS
 - STEAM HEATED
- ACCESSORIES -
- STAINLESS STEEL PERFORATED SHELVES - QTY. 2 PER UNIT

PERFORMANCE DATA

TEMPERATURE RANGE: 35° C TO 175° C

RECOVERY TIME TO 200°C (392°F) AFTER A 30 SECOND DOOR OPENING-10 MINUTES

NOTE-ABOVE IS BASED ON A 25°C (77°F) AMBIENT & AN EMPTY CHAMBER.

GENERAL NOTES

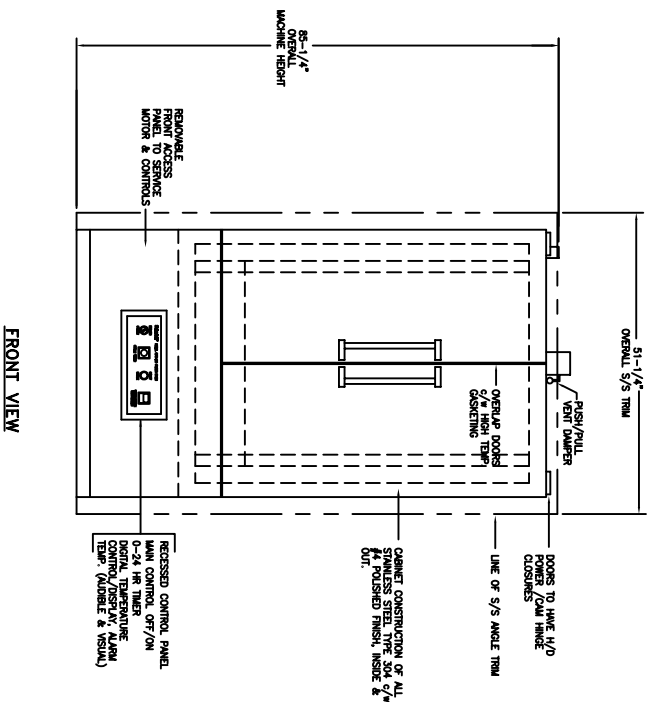
ELECTRICAL QUICK DISCONNECT TO BE PROVIDED BY OTHERS.

ELECTRICAL SUPPLY CONNECTIONS MUST BE PROVIDED WITHIN SEALTITE FLEX, AND BE FED VIA A FUSED DISCONNECT PANEL PRIOR TO CONNECTION TO MACHINE JUNCTION BOX, BY OTHERS.

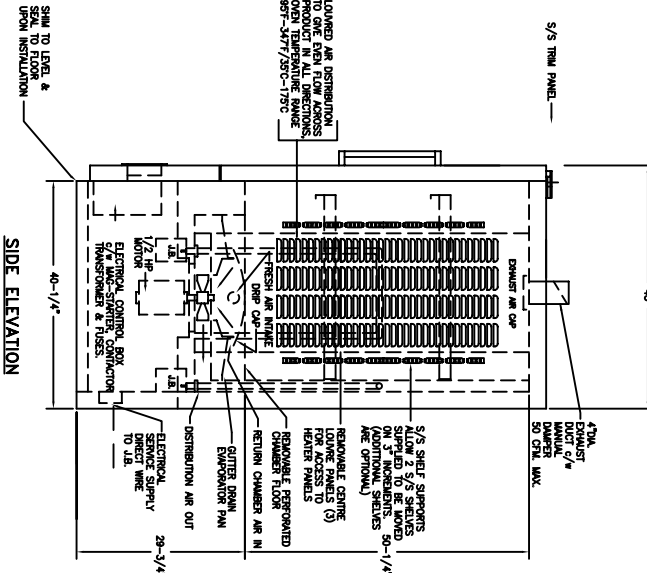
ALL SERVICES TO MACHINE (BY OTHERS) MUST COMPLY WITH ALL APPLICABLE LOCAL CODES AND PRACTICES REGARDING FINAL CONNECTIONS. RESPONSIBILITY HEREIN LIES WITH INSTALLATION COMPANY, AND NOT EQUIPMENT MANUFACTURER.

SCIENTEK RESERVES THE RIGHT TO MAKE PRODUCT IMPROVEMENT CHANGES NOT NECESSARILY SHOWN ON THIS DRAWING.

THIS DRAWING IS THE PROPERTY OF SCIENTEK AND DIVISIONS THEREOF. NO REPRODUCTION OR FACSIMILE SHALL BE MADE WITHOUT WRITTEN CONSENT.



FRONT VIEW



SIDE ELEVATION

MODEL # SFO-103
DOUBLE-DOOR FLOOR OVEN